

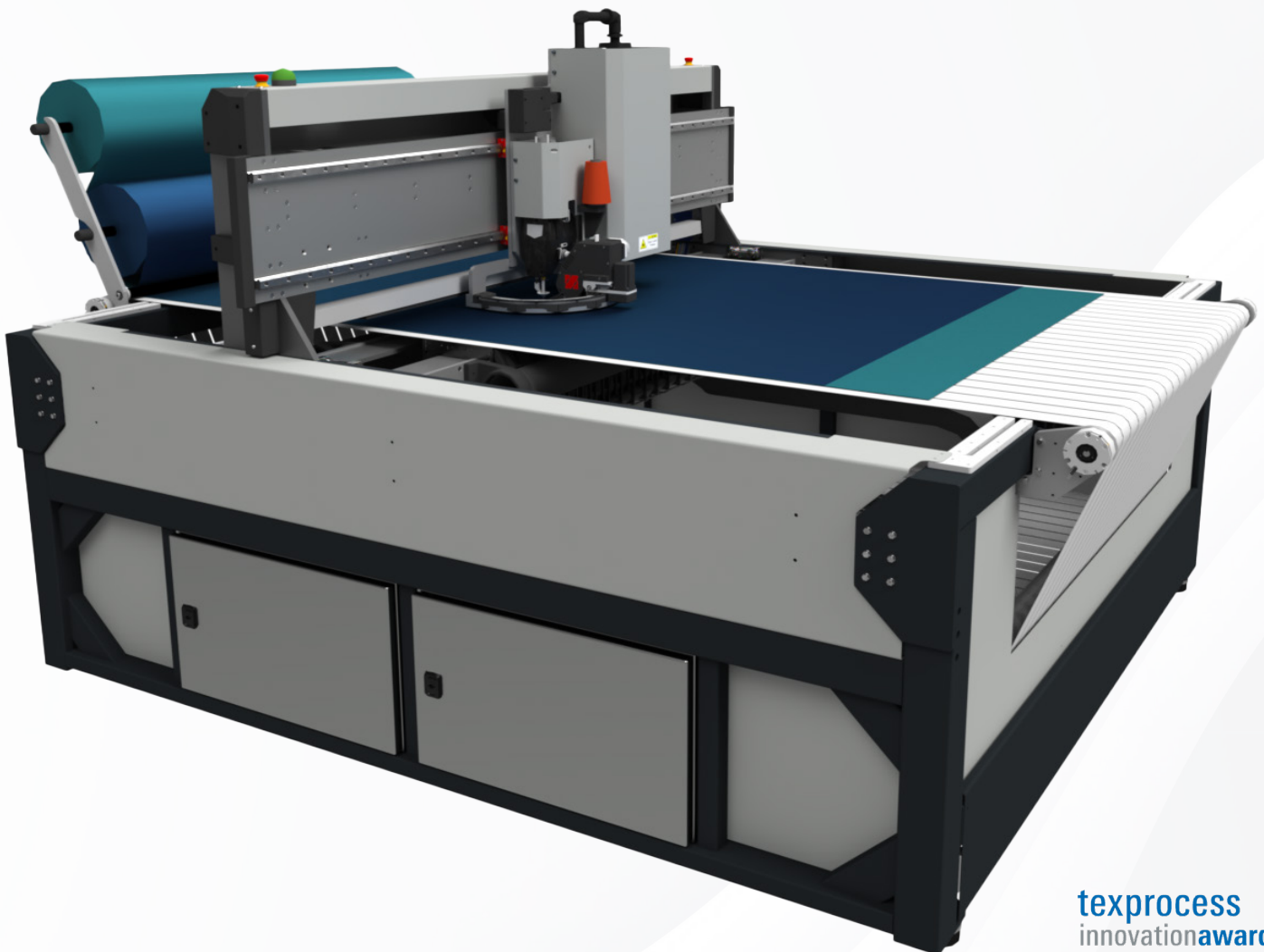
FASTSEWN

AUTOMATING THE TEXTILE INDUSTRY ONE STITCH AT A TIME

REDUCES UP TO 80% OF MANUAL
HANDLING, LOWERING PRODUCTION
TIME AND COST

PRECISE SEWING AND CUTTING IN
ONE GO, FULLY AUTOMATED AND
DIGITALLY CONTROLLED

JUST-IN-TIME MANUFACTURING
DIRECTLY FROM ONE OR MORE
TEXTILE ROLLS



texprocess
innovationaward.2024

 **FASTSEWN**



 **FASTSEWN.COM**



 **FASTSEWN**



THE TECHNOLOGY: WHAT IS MCT™?

FASTSEWN relies on a patented new innovative system called MCT or Moving Cavity Technology.

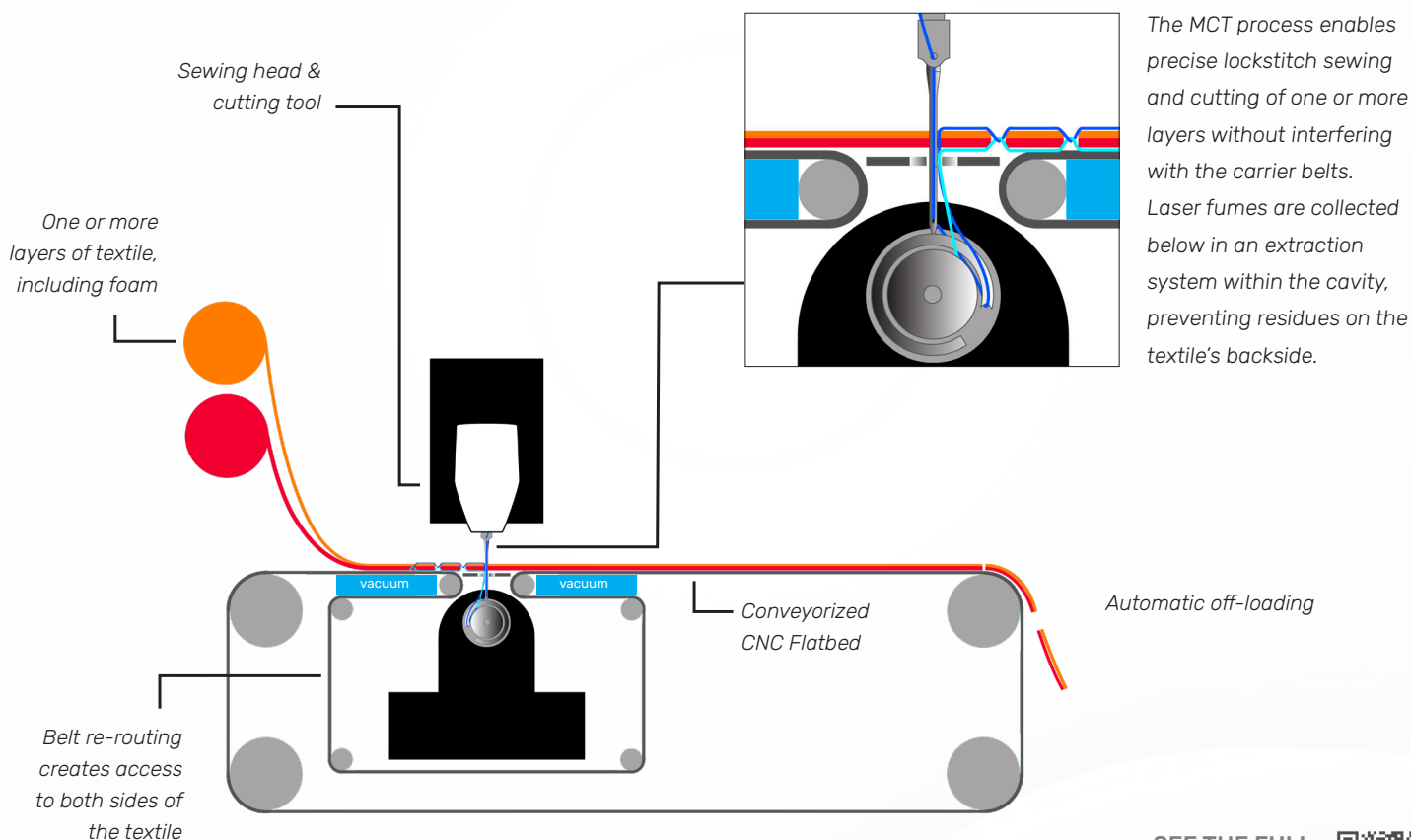
The system utilizes a **conveyorized CNC flatbed** table combined with a specialized **vacuum hold-down system**. A series of pulleys and rollers create a movable cavity which gives access to the textile from both above and below without moving or lifting it. This is achieved without strapping the fabric into frames. This practically **eliminates any manual handling**, which in many cases may take up to 80% of the total production time.

Sewing and cutting take place in the exact same location without moving the textile, ensuring **high accuracy** between stitching and cutting, typically more precise than can be done by semi-automatic machine sewing.

Furthermore, the MCT solution allows for automated sewing and cutting of very **complex contours** – even sewing internally inside the graphics or other sewn products can now be done with ease.

WHY IS IT AN INDUSTRY GAME CHANGER?

- FASTSEWN relies on vacuum technology and no rigid frames
- No manual loading and off-loading of parts
- Sewing and cutting in one combined workflow
- One operator can run and restock one or more machines with only minimal training required
- Digital One Piece Flow Production
- Fully integrated with industry design and printing solutions



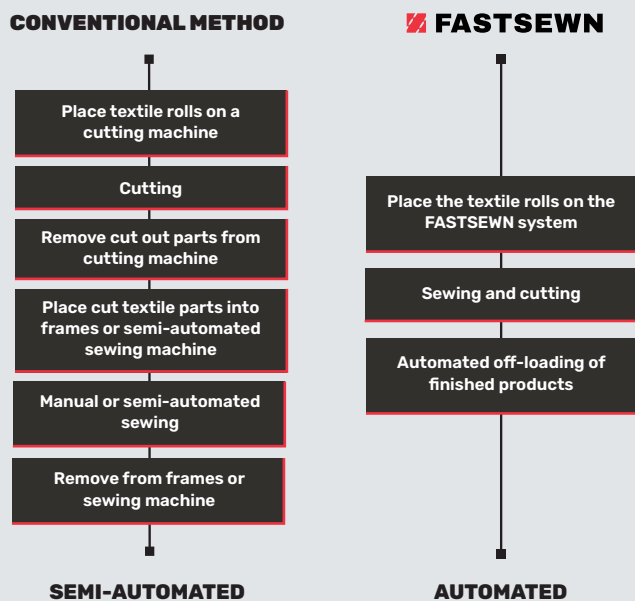
SEE THE FULL
PROCESS ON
YOUTUBE:



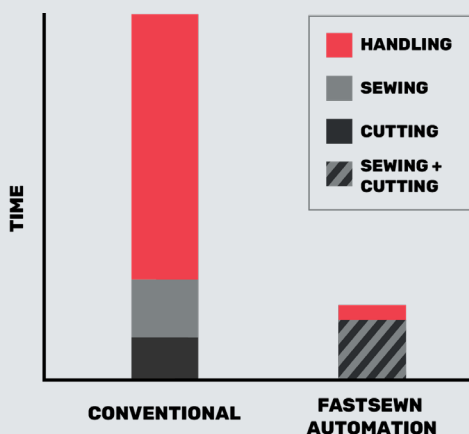
The patented MCT™ process delivers fully automated sewing and cutting of one or multiple layers of textiles. The system uses an industrial class Juki sewing head with matching hook/bobbins, and cutting is done using a sealed CO2 laser or a high-precision oscillating knife tool.

SEWN GOODS PRODUCTION

The FASTSEWN system completes in one process the handling, re-positioning, and pre-cutting, required by other solutions.



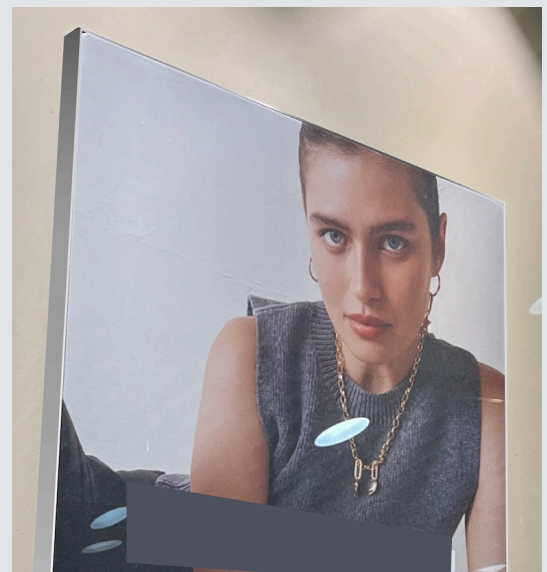
Conventional methods spend up to 80% of time on handling and re-registering the textiles, but FASTSEWN reduces this to nearly zero. One FASTSEWN operator operating multiple machines can match the output of 6–12 people using conventional methods, delivering an **ROI of 8–12 months** based on a one-shift operation.



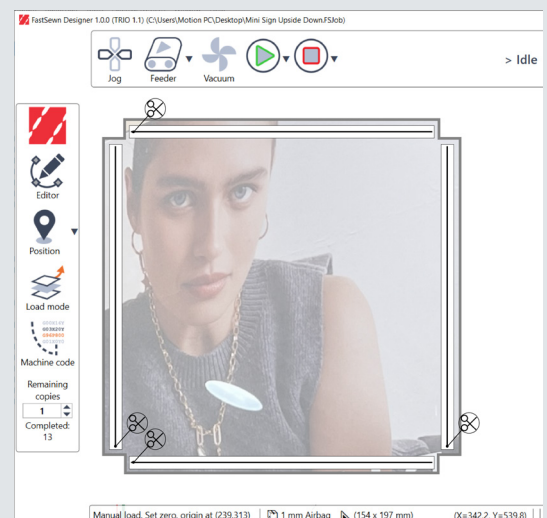
In addition, the FASTSEWN process **saves floor space**, by combining sewing and cutting.

DIGITAL PRINTING

FASTSEWN is particularly well fitted to finish digitally printed textiles produced by the graphics industry (SEG, pillow graphics, etc.). An advanced **vision registration** system tracks the printed textiles and ensures accurate sewing & cutting.



FASTSEWN Designer is an advanced and intuitive Graphic User Interface (UX) from which operators can import files from popular digital printing systems, set stitching parameters, length, speed, offsets, thickness and more, with the option to store job settings for quick setup.



WE PLAN TO MEET THE **SUSTAINABLE DEVELOPMENT GOALS** (SGDs) SET BY THE UNITED NATIONS



As part of our mission, we focus on supporting responsible development in our industry.



Goal 8 - decent work and economic growth: Improved working conditions for sewing machine operators – leads to a better working environment while increasing productivity and jobs locally.



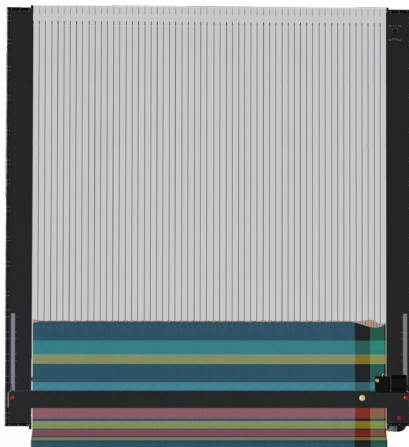
Goal 9 - industry, innovation and infrastructure: Reshore production with on-demand local micro factories, simplifying the supply chain and reducing the need for long transport routes.



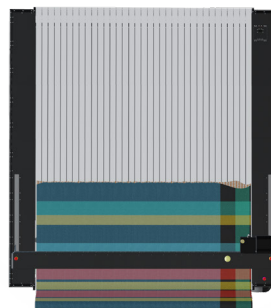
Goal 12 - responsible consumption and production: With on-demand production we virtually eliminate the need for overproduction, which is a well-known problem in the textile industry.

FASTSEWN MACHINE SIZES

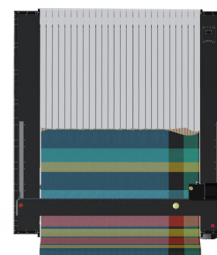
Systems are offered in several sizes matching the most popular textile roll sizes. Other systems length can be custom built upon special request.



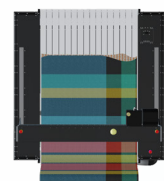
130 x 130 in
3.3 x 3.3 m



86 x 86 in
2.2 x 2.2 m



70 x 70 in
1.8 x 1.8 m



48 x 48 in
1.2 x 1.2 m

All systems include sewing head, knife or laser cutting tool, vacuum blowers, conveyor system. A laser fume extraction unit is included with laser systems. A non-motorized roll off unit is included. Optional motorized roll-off units for one or more rolls are available.

GET IN TOUCH

FASTSEWN.COM

Mikkelsen Innovation ApS, Aarhus Denmark

America: Steve.Aranoff@fastsewn.com / +1 928 300 8757

Europe & Asia: Steen.Mikkelsen@fastsewn.com / +45 50590554

[in linkedin.com/company/fastsewn](https://www.linkedin.com/company/fastsewn)

[youtube.com/@FASTSEWN](https://www.youtube.com/@FASTSEWN)